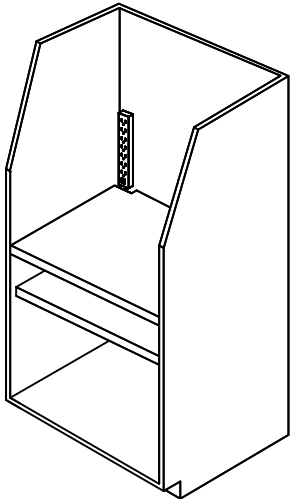


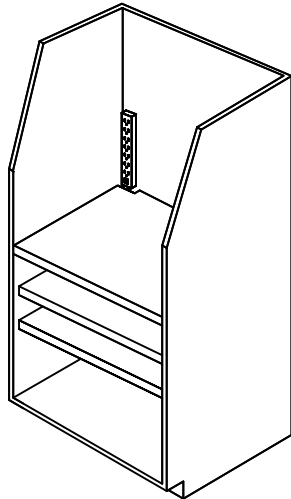
SEBASTIAN STANDARD ENLARGER BOOTHS

EACH ENLARGER BOOTH IS COMPLETELY ASSEMBLED, STANDS 72" TALL & IS AVAILABLE IN SEVEN REGULAR MODELS (30, 33, 36, 39 & 42" WIDE) AND ONE WHEELCHAIR MODEL (36, 39 AND 42" WIDE). EACH MODEL HAS A PLUG-STRIP WITH A 72" CORD & CAP TO ACCOMODATE CONNECTION TO AN ELECTRICAL OUTLET 18" AFF (OUTLET BY OTHERS). FINISH THROUGHOUT: WILSON ART "BLACK" #1595-60. ENLARGERS NOT INCLUDED.

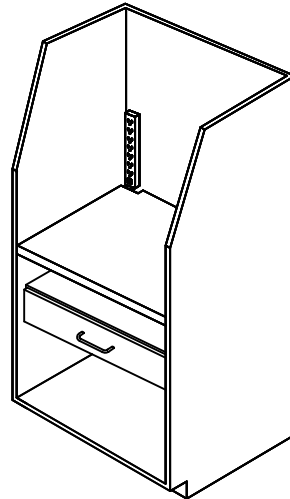
OPTIONS: "SLKS" DRAWER LOCKS W/MASTER KEY. "SSL" LIGHT-TIGHT DRAWER LID.
 "SSLL" LIGHT-TIGHT DRAWER LID FOR DRAWERS WITH LOCKS.



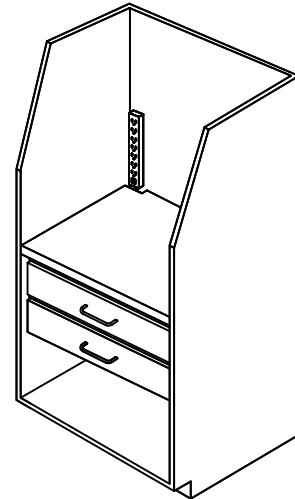
SEB2 BOOTH
 WITH SHELF
 AND BASE SHELF
 (SEE PAGE C-21)



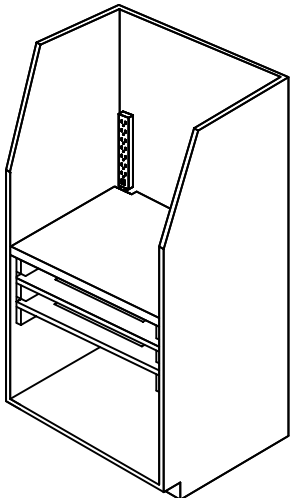
SEB3 BOOTH
 WITH 2 SHELVES
 AND BASE SHELF
 (SEE PAGE C-22)



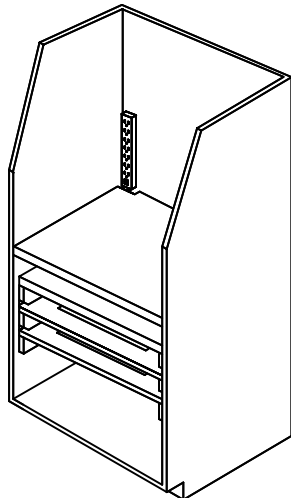
SEB4 BOOTH
 W/SHELF, DRAWER
 AND BASE SHELF
 (SEE PAGE C-23)



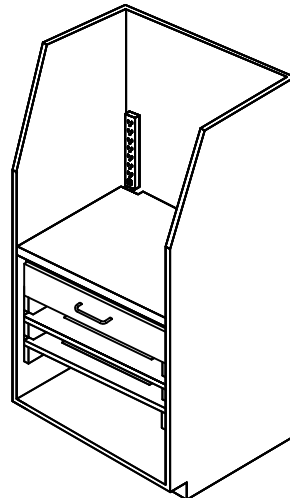
SEB5 BOOTH
 WITH 2 DRAWERS
 AND BASE SHELF
 (SEE PAGE C-24)



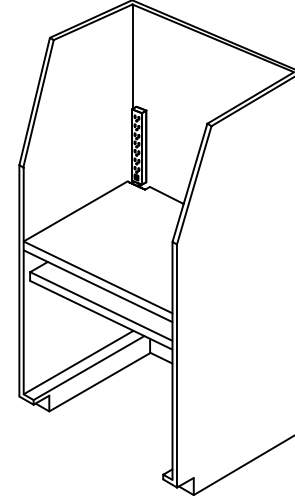
SEB6 BOOTH
 WITH 2 SCREENS
 AND BASE SHELF
 (SEE PAGE C-25)



SEB7 BOOTH
 W/SHELF, 2 SCREENS
 AND BASE SHELF
 (SEE PAGE 26)



SEB8 BOOTH
 W/DRAWER, 2 SCREENS
 AND BASE SHELF
 (SEE PAGE C-27)



SEB9H - ADA BOOTH
 WITH SHELF AND
 WHEELCHAIR READY
 (SEE PAGE C-28)



SEBASTIAN DARKROOM PRODUCTS™
DIVISION OF CALIFORNIA STAINLESS MFG.

Unique, Innovative & Engineered to Work
TOLL FREE (888) 712-7035 FAX (805) 484-1030
calstainless@aol.com
www.sebastiandarkroomprod.com